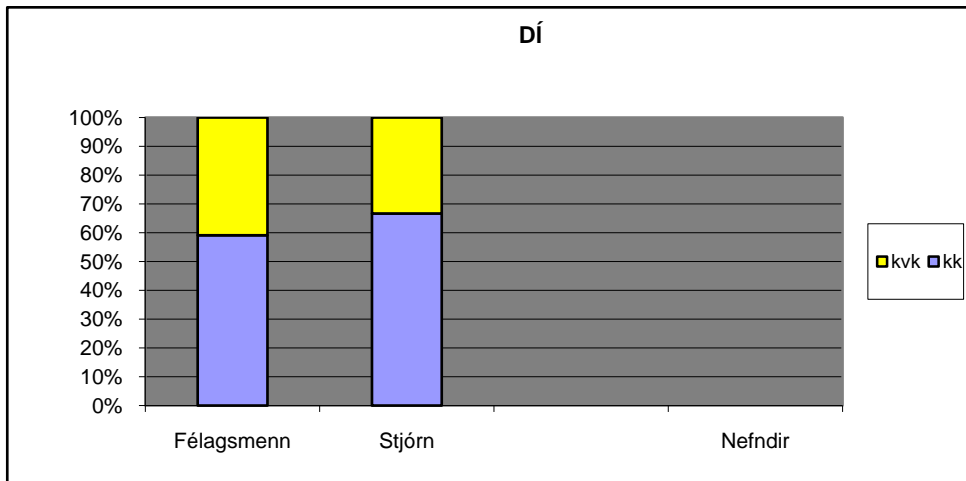


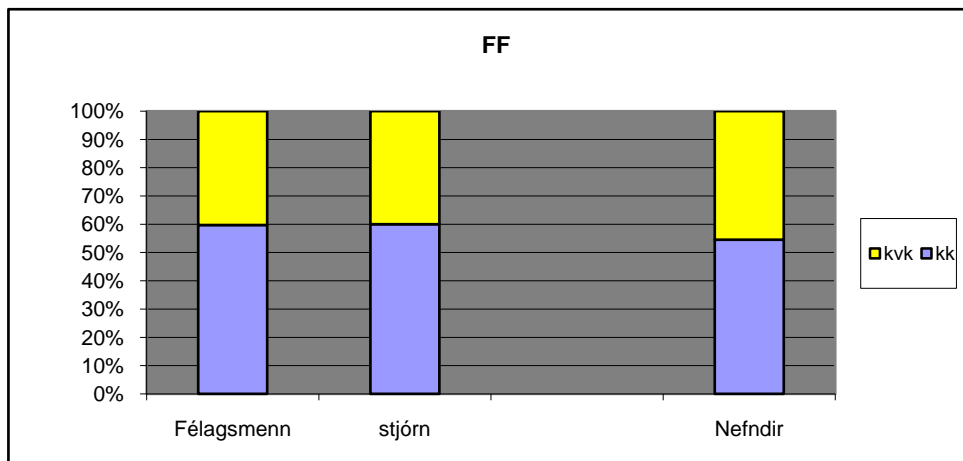
Kynjahlutfall í aðildarfélögum Bandalags háskólamanna

Tölur frá febrúar 2008.

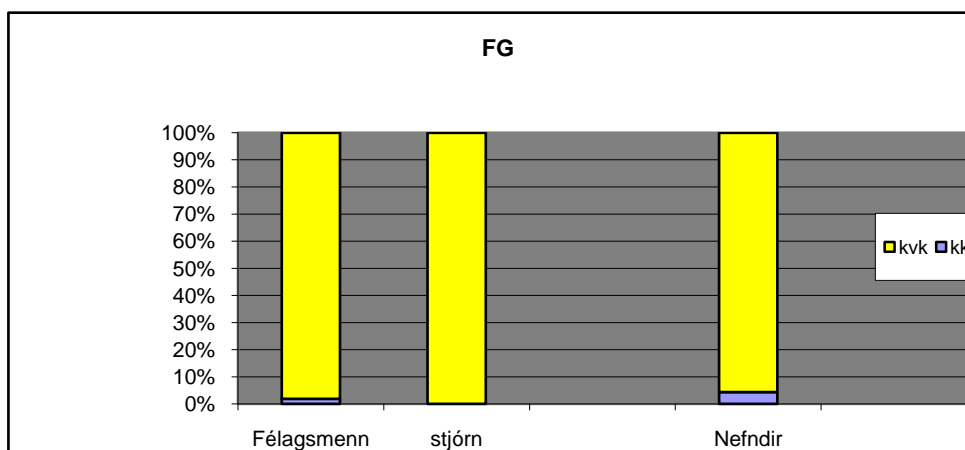
Dýralæknafélag Íslands (66)



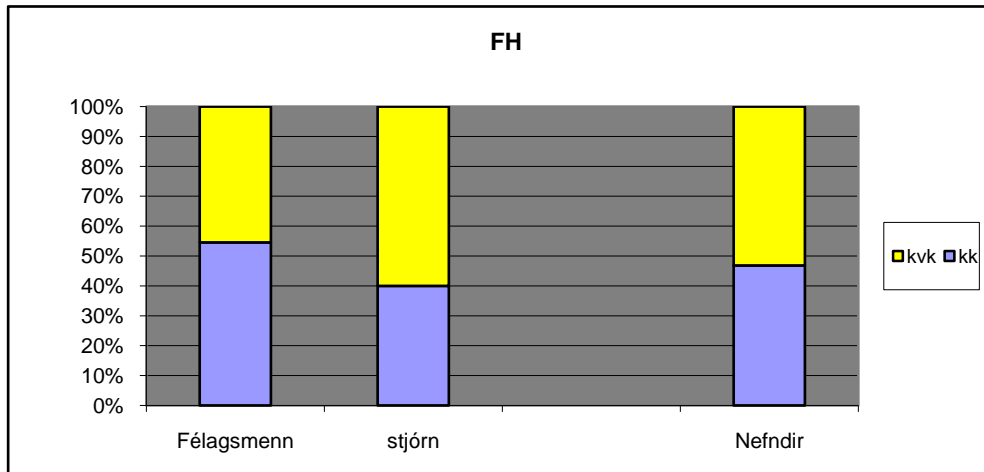
Félag fréttamanna (82)



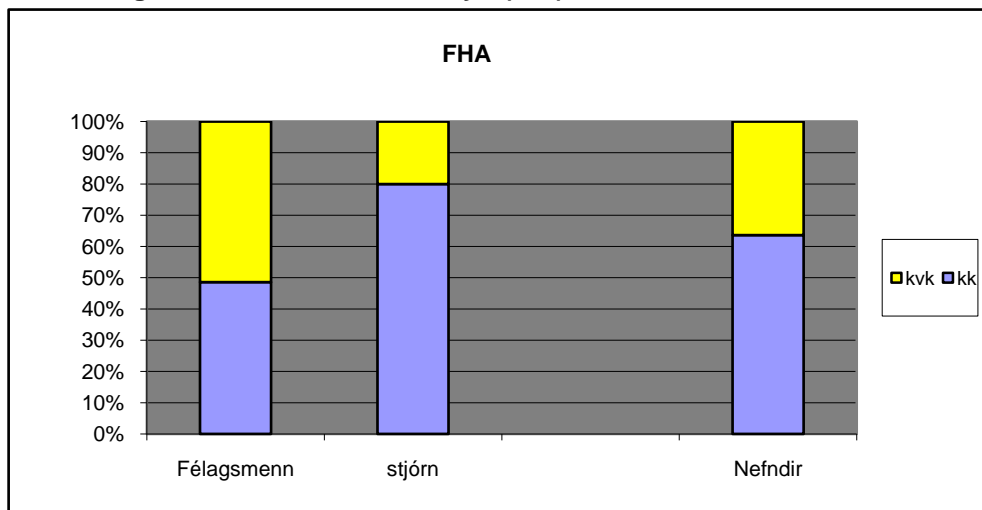
Félag geislafræðinga(108)



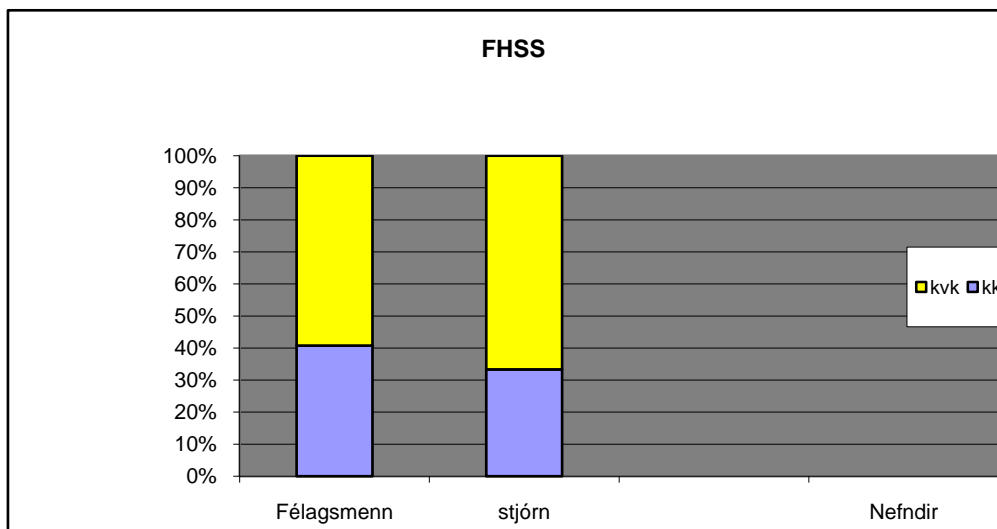
Félag háskólakennara (856)



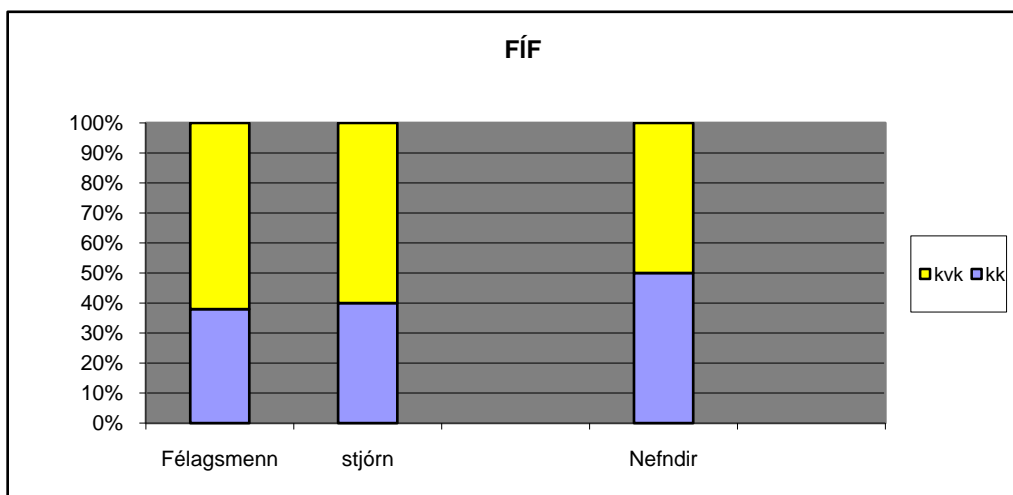
Félag háskólakennara á Akureyri (175)



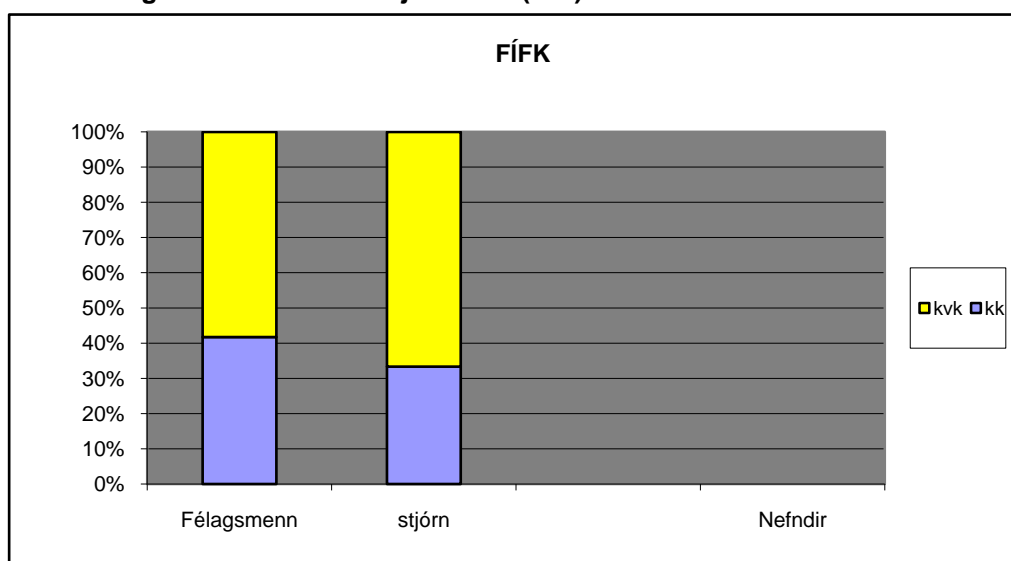
Félag háskólam. starfsm. Stjórnarráðsins (454)



Félag íslenskra félagsvísindamanna (108)

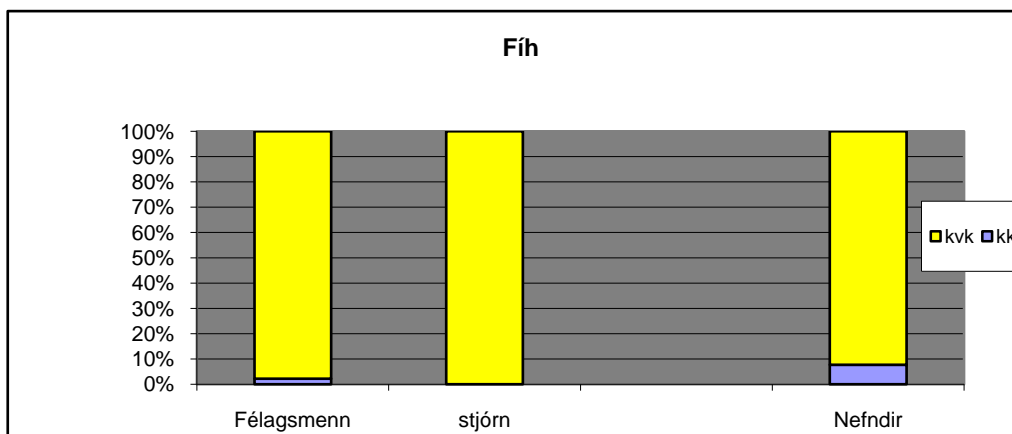


Félag íslenskra fræða - kjaradeild*(139)

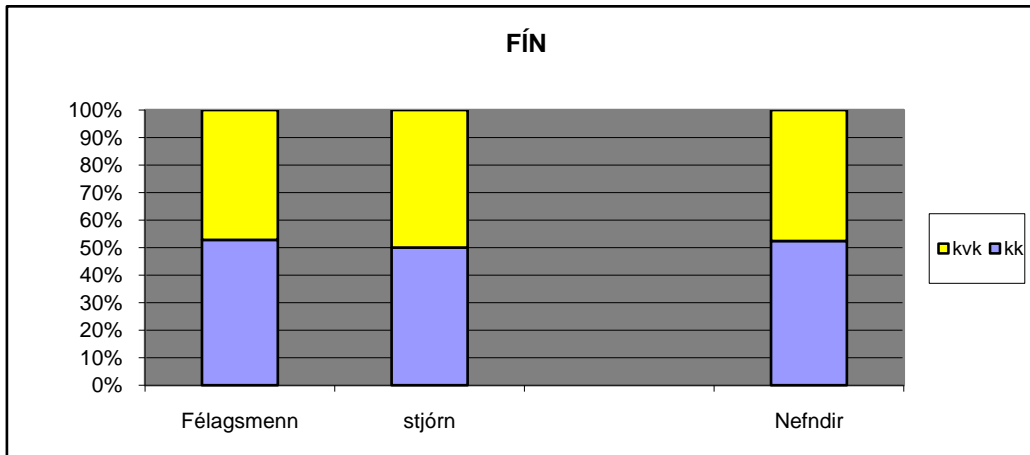


*FÍFK sameinaðist Útgarði 2008 - nýtt félag heitir Fræðagarður

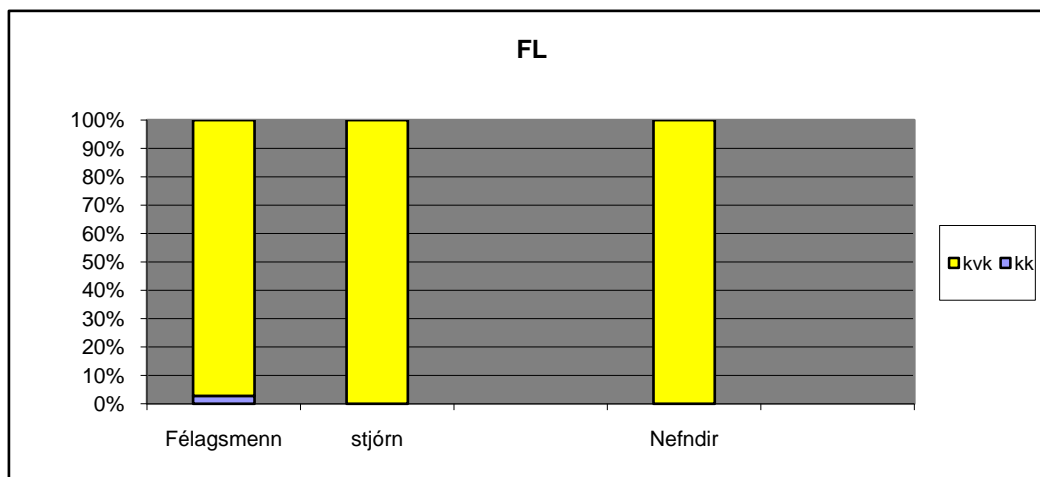
Félag íslenskra hjúkrunarfræðinga (2561)



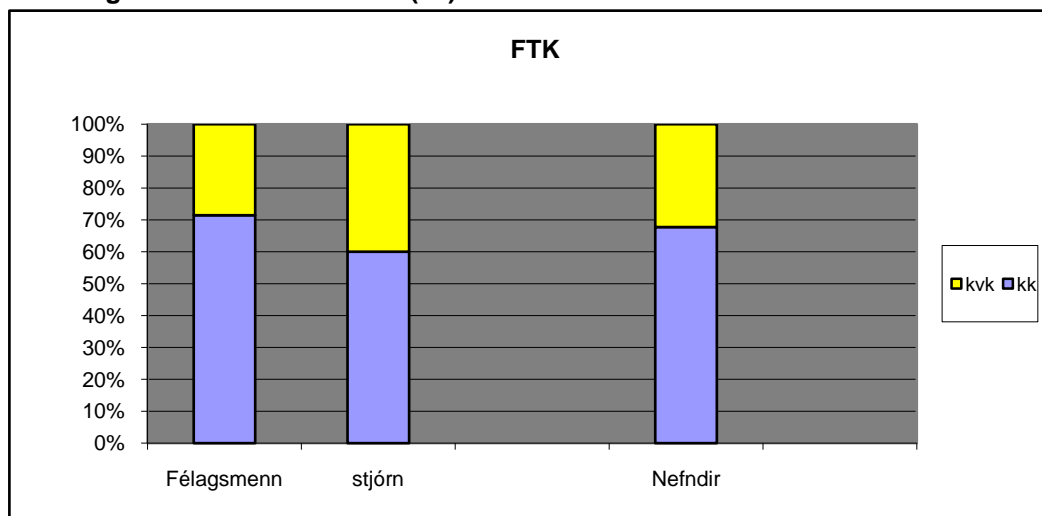
Félag íslenskra náttúrufræðinga (1150)



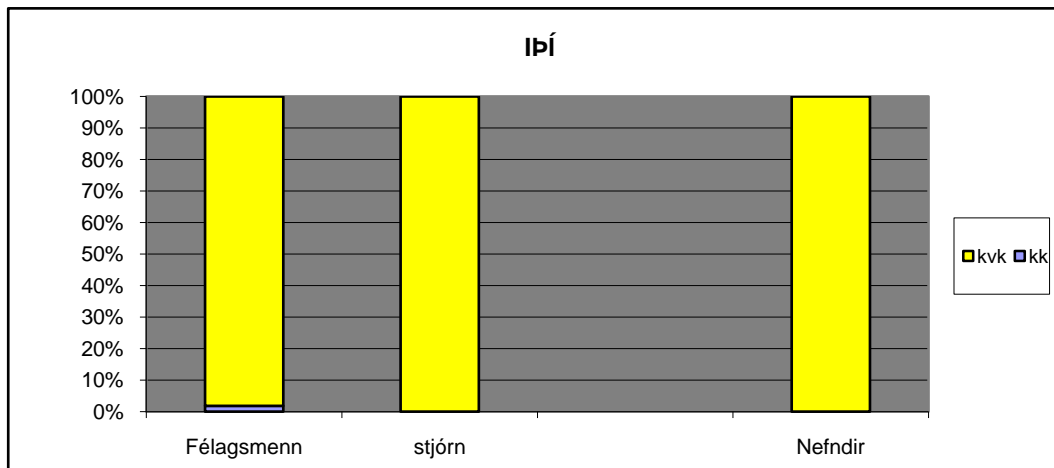
Félag lífeindafræðinga (286)



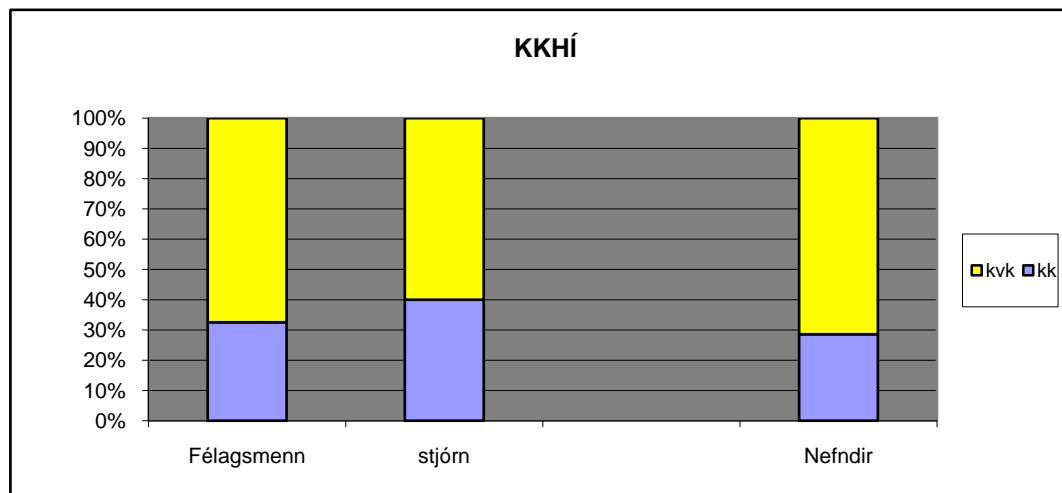
Félag tækniháskólakennara (28)



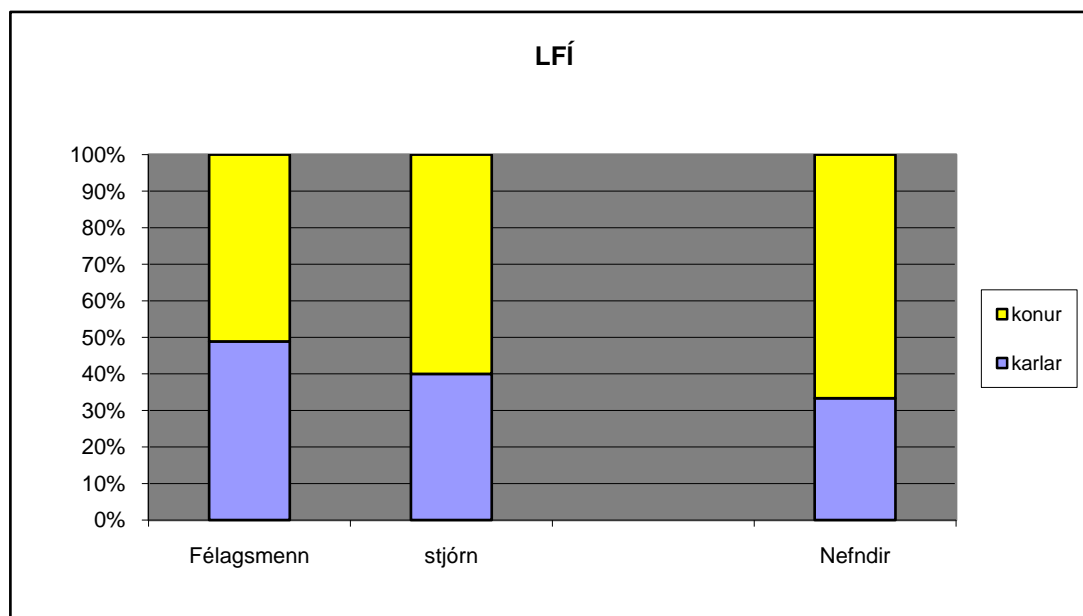
Iðjubjálfafélag Íslands (165)



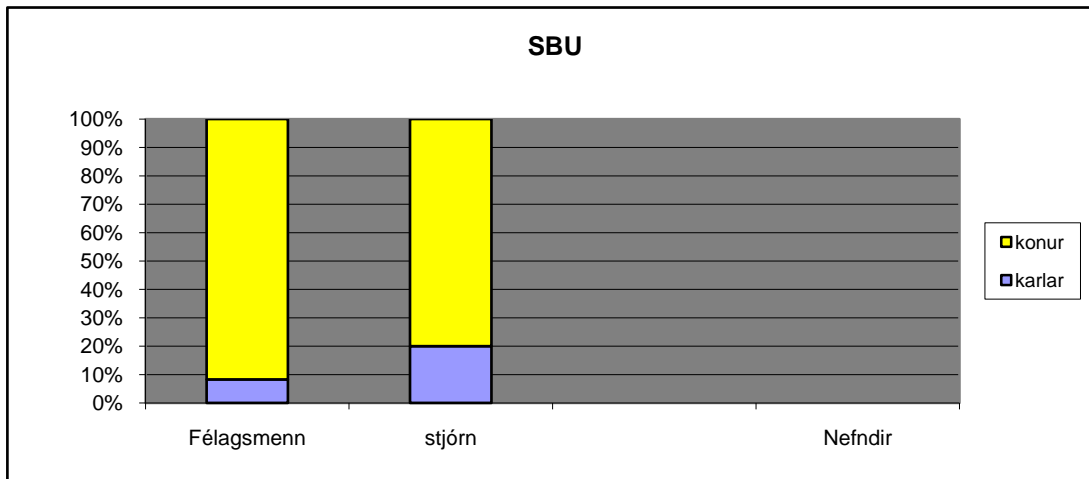
Kennarafélag Kennaraháskóla Íslands (212)



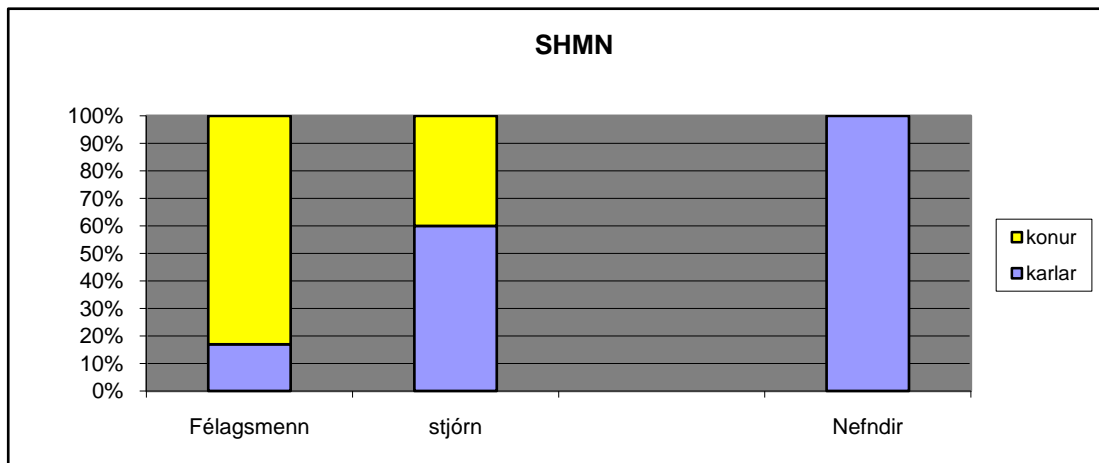
Leikarafélag Íslands (45)



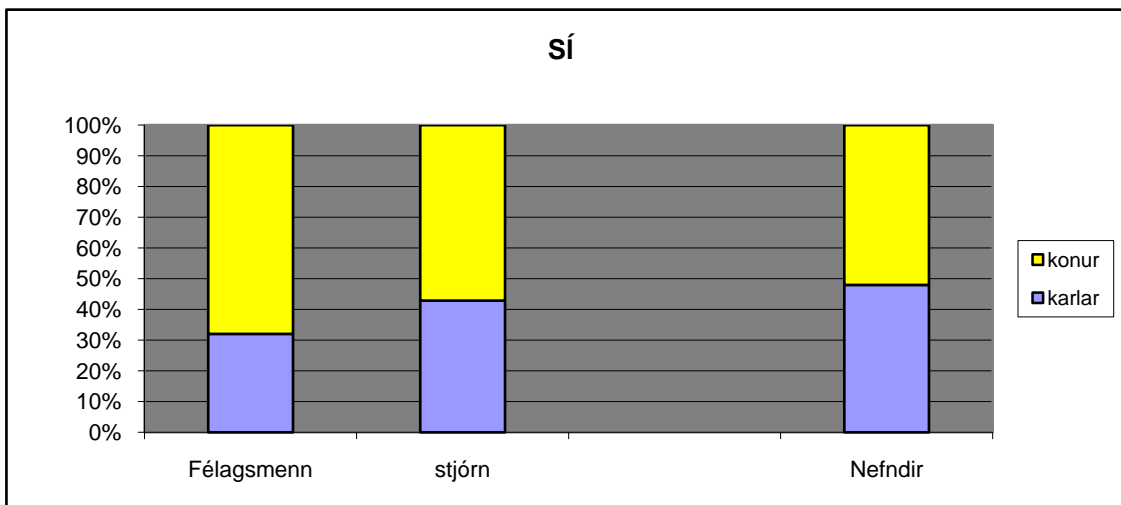
Stéttarfélag bókasafns- og upplýsingafræðinga (254)



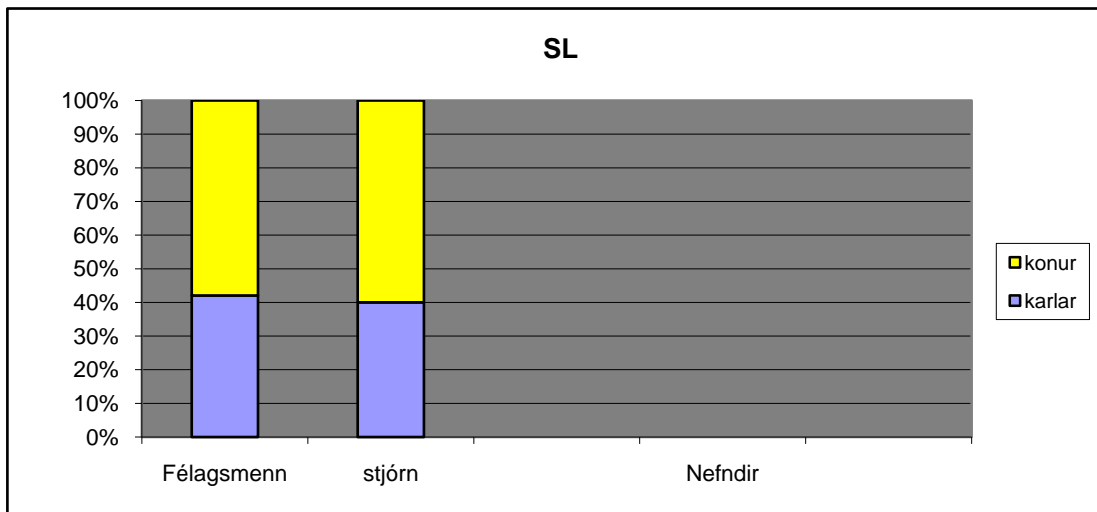
Stéttarfélag háskólamanna á matvæla- og næringarsviði (183)



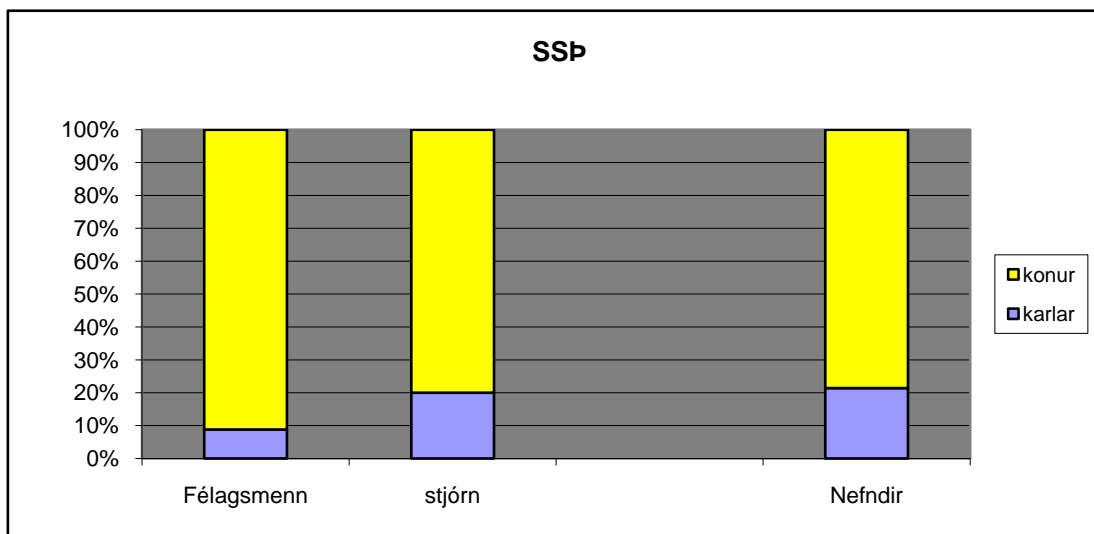
Sálfræðingafélag Íslands (184)



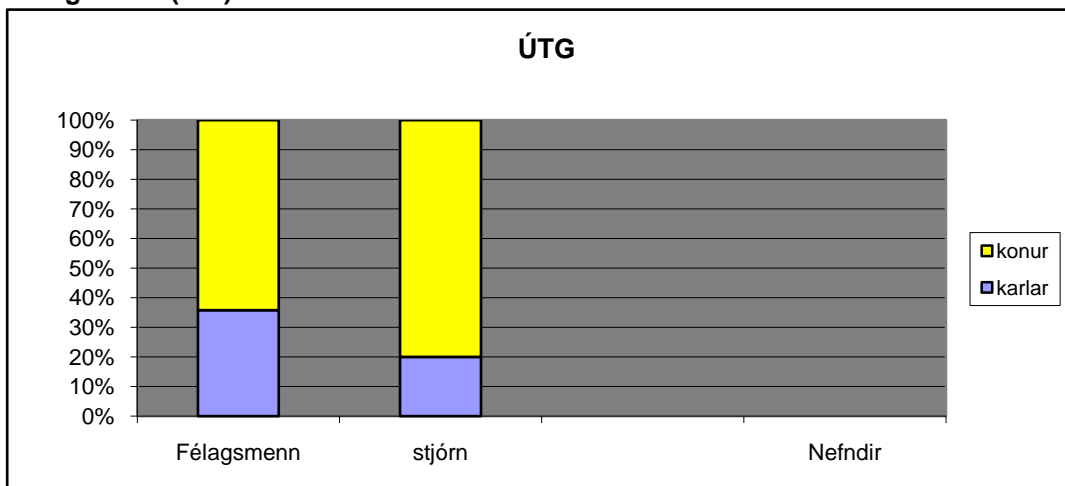
Stéttarfélag lögfræðinga (321)



Stéttarfélag sjúkráþjálfa (204)

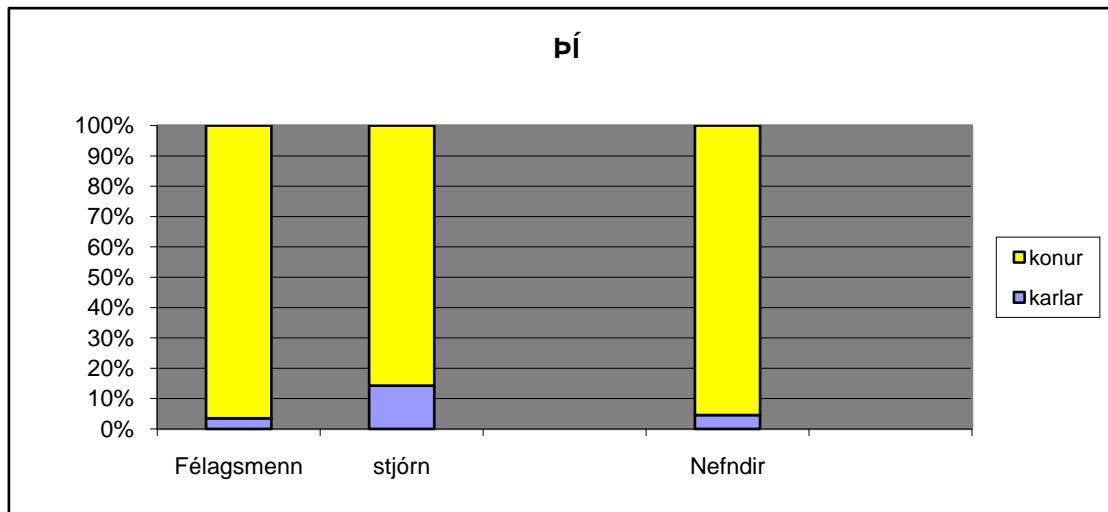


Útgarður**(788)



**Útgarður sameinaðist FÍFK 2008 - nýtt félag heitir Fræðagarður

Þroskapjálfafélag Íslands (484)



Bandalag háskólamanna (9882)

